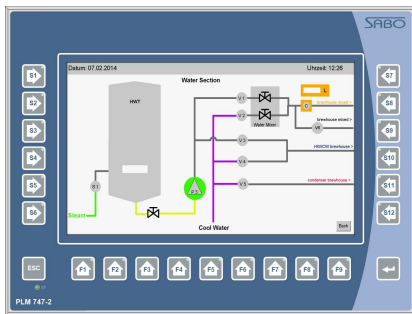


Description:

MTB.747.25 D1



- **Master Terminal PLM 747-1 with CPU A9/450**
- **9" WVGA Touch Display**
- **TFT 800 x 480 Dots**
- **Membrane keyboard 23 buttons**
- **2x RS232 / RS485, 2x CAN**
- **2x USB, 1x Ethernet**
- **1x SD Memory Card Slot**
- **128 MB RAM, 4 GB FLASH**
- **64 kB Retain**

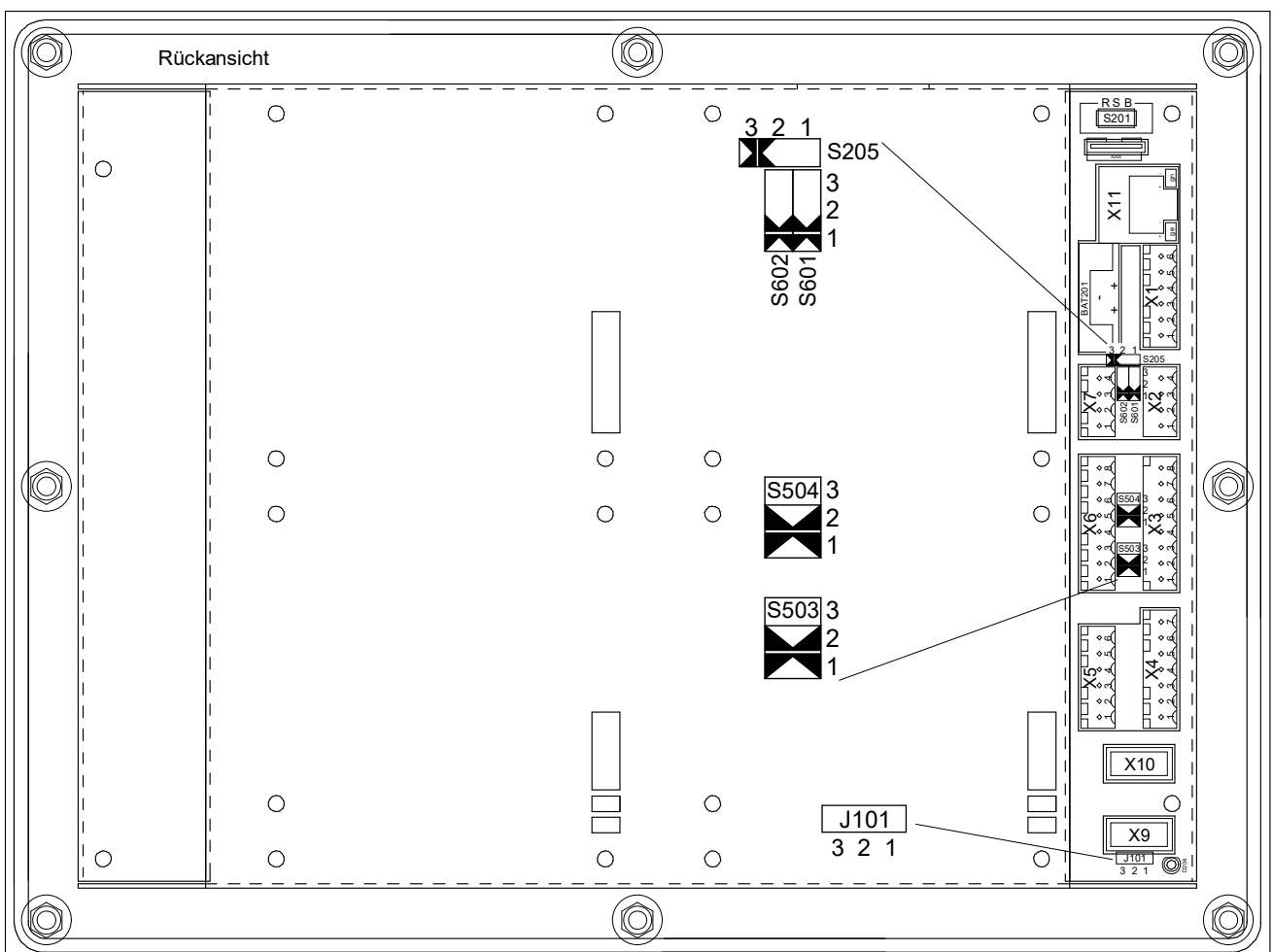
Master Terminal PLM 747-1 with CPU A9/450 and 9" WVGA Touch Display (TFT, 800 x 480 Dots). Graphics capable. Backlight is enabled, when touch is pressed. Backlight deactivation is freely programmable. Membrane keyboard with 23 buttons and 23 LED.

128 MB RAM, 4 GB FLASH, 64 kB Retain

Interfaces: 2x RS232 (RX, TX) or 2x RS485, 2x CAN, 2x USB
1x Ethernet, 1x SD Memory Card Slot

Module equipped with pluggable screw-type terminals, aluminium box for circuit cabinet installation.

Terminal Connection:



X5	X6
6 DA03	8 RS485-0-GND
5 DA02	7 RS485-0-B
4 DA01	6 RS485-0-A
3 DA00	5 RS232-1-CTS
2 24VDC-DA	4 RS232-1-RTS
1 DGND	3 RS232-1-TX
	2 RS232-1-RX
	1 DGND

X7
4 CAN-1-L
3 CAN1--H
2
1 CAN-1-GND

S201 Slide switch CPU Status
R Run ⇒ Autostart
S Stop ⇒ IEC 1131 User Lock
B Boot ⇒ Bootloader aktive

BAT201
Battery

D204
Status LED

X9
USB-0

X10
USB-1

X4
7 DGND
6
5
4 DE03
3 DE02
2 DE01
1 DE00

X3
8 RS 485-1-GND
7 RS485-1-B
6 RS485-1-A
5 RS232-0-CTS
4 RS232-0-RTS
3 RS232-0-TX
2 RS232-0-RX
1 DGND

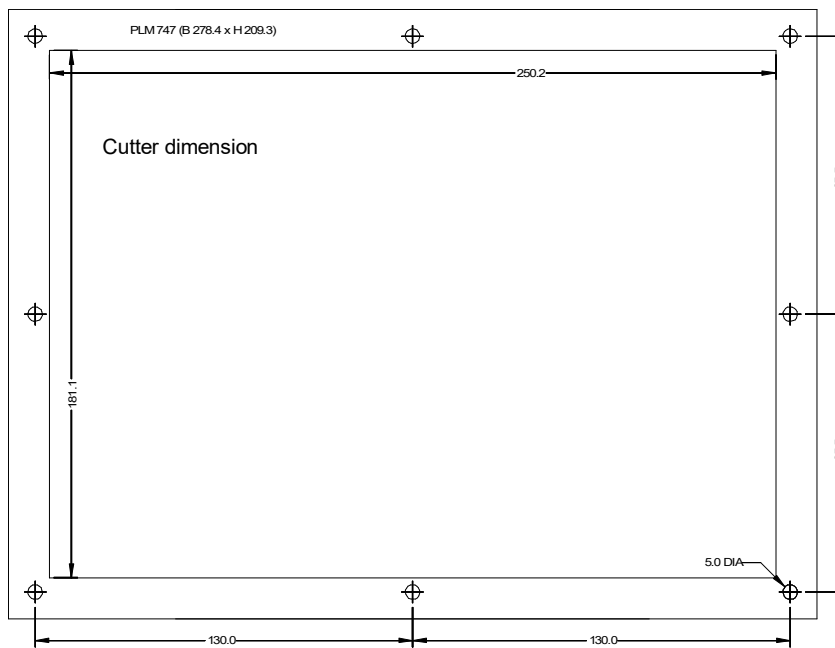
X2
4 CAN-0-L
3 CAN-0-H
2
1 DGND

X1
6 WD-NO
5 WD-NC
4 WD-COM
3 24VDC
2 GND
1 FE

X11
Ethernet-1

Cutout dimensions for circuit cabinet installation:

MTB.747.25 D1



Please note the following cutout dimensions for circuit cabinet installation:

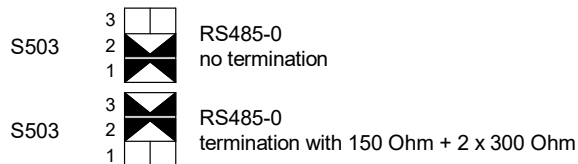
Assembly dimension:
width x height x depth
278,4 x 209,3 x 60 mm

Cutter dimension:
width 250,2 mm x height 181,1 mm

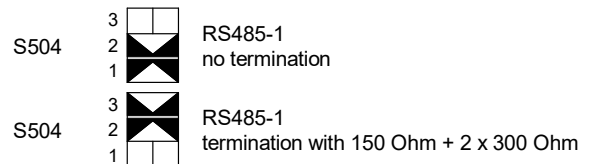
8 drilled holes Ø 5,0 mm
for 8 stud bolts M4

Configuration:

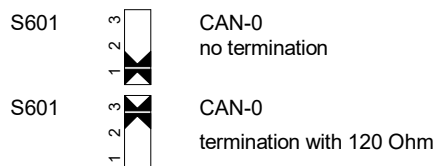
Slide switch RS485-0 termination



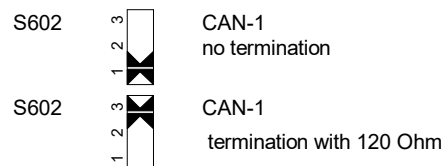
Slide switch RS485-1 termination



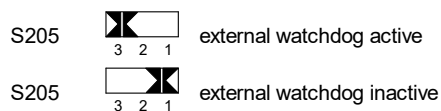
Slide switch CAN-0 termination



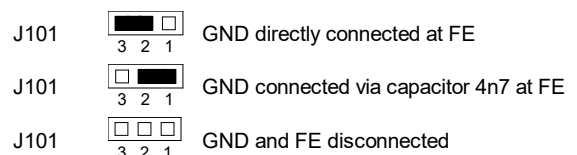
Slide switch CAN-1 termination



Jumper Watchdog



Jumper GND / FE



Technical Specifications:

MTB.747.25 D1

Supply

24VDC ±10 %, max. deviation 5 %

Operating current

Basic device approx. 650 mA
 additionally digital outputs

Display

9" WVGA Touch Display, resistive, 4-wire
 TFT, 800 x 480 Dots, graphics capable

System

Microcontroller CPU A9/450 with
 Interface CAN

Memory

128 MB RAM, 4 GB FLASH, 64 kB Retain

Interfaces serial

2x RS232 (RX, TX) or RS485 (max. 2
 interfaces usable)
 2x CAN BUS
 2x USB
 1x Ethernet TCP/IP

SD Memory Card Slots

1x SD Card Slot
 1x Micro SD Card Slot (optional)

Status Indication

1 LED module status indication

SPS Programming

IEC 61131-3 / CODESYS

Digital Inputs

4 Digital Inputs 24VDC, ±10 %, 10 mA
 (DE00 ... DE03)

Digital Outputs

4 Digital Outputs Transistor, 24VDC 0,5 A
 (DA00 ... DA03)

Watchdog Relay

Watchdog with relay output
 Change-over contact 24VDC

Battery 3V / 170 mAh

Durability approx. 2 years (Manufacturer
 Information), Data preservation during
 battery change approx. 2 hours.

Realtime Clock

Clock with Date, Data preservation via battery

Climatic Conditions

storage temperature -10...+70 °C
 surrounding area temperature +5...+40 °C
 atmospheric moisture until 85 % without
 condensation according to VDE 0160,
 EN 50178, Rating 3K3

Mechanical Specifications

Aluminum box for circuit cabinet installation
 pluggable screw-type terminals
 Dimensions: width x height x depth
 278,4 x 209,3 x 60 mm
 Weight approx. 1350 g

General Informations

Use shielded cables for serial data lines.
 The Master Terminal requires sufficient
 grounding!

Protection Category

according to DIN 40050
 IP 65 (front side)
 IP 20 (back side)

Installation Advices

Please pay attention to the separate
 informations about EMC-compatible
 hardware installation in the systems manual
 of the SABO Elektronik GmbH.

downloadable via <http://www.sabo.de>

Installation Advices:

Configuration

Warning! Please note the internal configuration, the firmware version
 and mounting details before module installation.

Mounting

Do not plug the extension module when a voltage is supplied, because
 module damage or data loss are possible.

CAN Bus Termination

In standard termination the microprocessor module respectively the
 first fieldbus module and in addition the last fieldbus module should be
 terminated. Maximum two terminations are allowed.

Installation Advices

Please pay attention to the separate informations about EMC-
 compatible hardware installation in the systems manual of the SABO
 Elektronik GmbH.

downloadable via <http://www.sabo.de>

Device:

Master Terminal PLM 747-2 with CPU A9/450

Order Code:

MTB.747.25