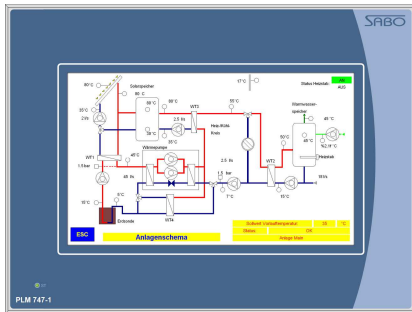


Description:

MTB.747.15 D1



- **Master Terminal PLM 747-1 with CPU A9/450**
- **9" WVGA Touch Display**
- **TFT 800 x 480 Dots**
- **2x RS232 / RS485, 2x CAN**
- **2x USB, 1x Ethernet**
- **1x SD Memory Card Slot**
- **128 MB RAM, 4 GB FLASH**
- **64 kB Retain**

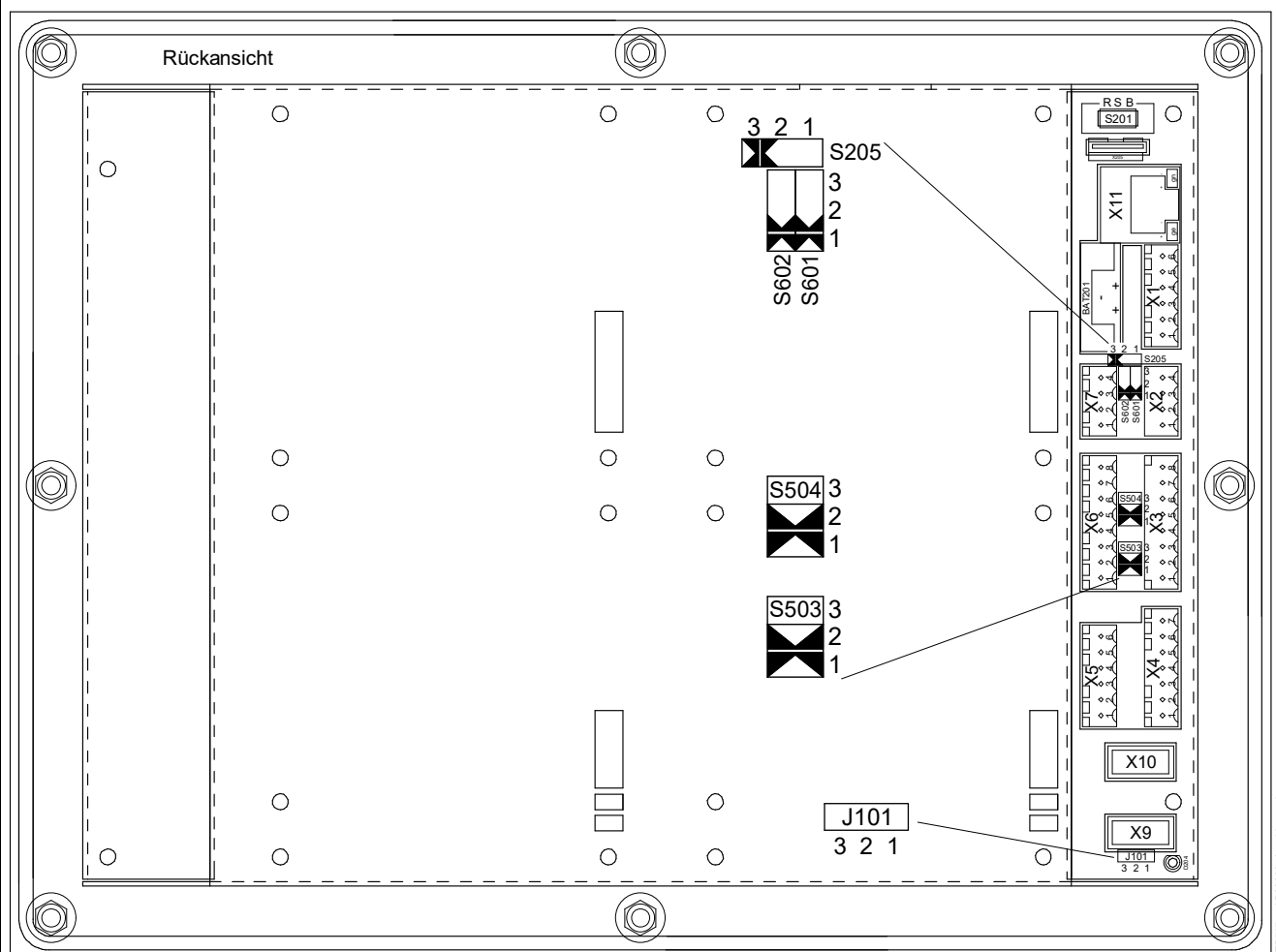
Master Terminal PLM 747-1 with CPU A9/450 and 9" WVGA Touch Display (TFT, 800 x 480 Dots). Graphics capable. Backlight is enabled, when touch is pressed. Backlight deactivation is freely programmable.

128 MB RAM, 4 GB FLASH, 64 kB Retain

Interfaces: 2x RS232 (RX, TX) or 2x RS485, 2x CAN, 2x USB
1x Ethernet, 1x SD Memory Card Slot

Module equipped with pluggable screw-type terminals, aluminium box for circuit cabinet installation.

Terminal Connection:



X5

- 6 DA03
- 5 DA02
- 4 DA01
- 3 DA00
- 2 24VDC-DA
- 1 DGND

X6

- 8 RS485-0-GND
- 7 RS485-0-B
- 6 RS485-0-A
- 5 RS232-1-CTS
- 4 RS232-1-RTS
- 3 RS232-1-TX
- 2 RS232-1-RX
- 1 DGND

X7

- 4 CAN-1-L
- 3 CAN1--H
- 2
- 1 CAN-1-GND

S201 Slide switch CPU Status

- R Run ⇒ Autostart
- S Stop ⇒ IEC 1131 User Lock
- B Boot ⇒ Bootloader active

BAT201 Battery

D204 Status LED

X9 USB-0

X10 USB-1

- ### X4
- 7 DGND
 - 6
 - 5
 - 4 DE03
 - 3 DE02
 - 2 DE01
 - 1 DE00

- ### X3
- 8 RS 485-1-GND
 - 7 RS485-1-B
 - 6 RS485-1-A
 - 5 RS232-0-CTS
 - 4 RS232-0-RTS
 - 3 RS232-0-TX
 - 2 RS232-0-RX
 - 1 DGND

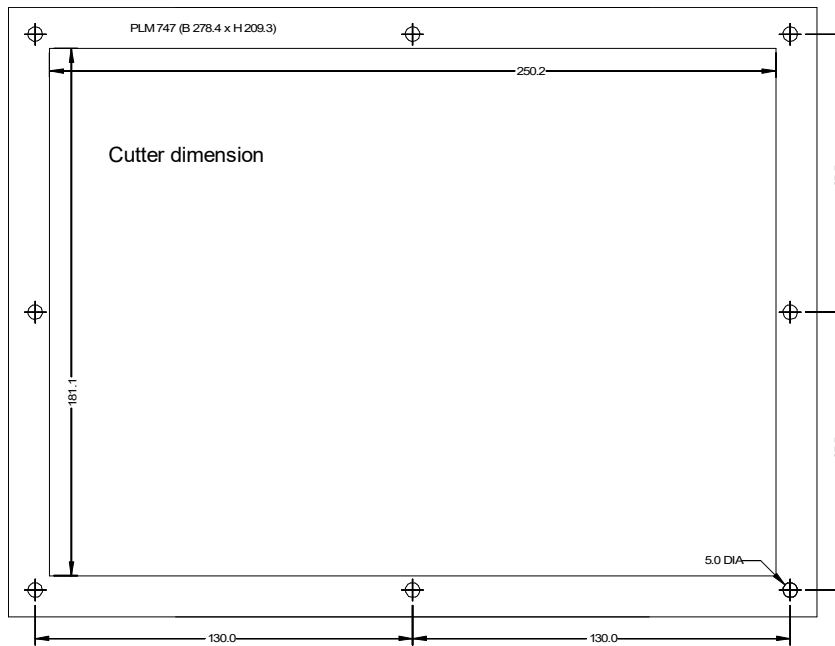
- ### X2
- 4 CAN-0-L
 - 3 CAN-0-H
 - 2
 - 1 DGND

- ### X1
- 6 WD-NO
 - 5 WD-NC
 - 4 WD-COM
 - 3 24VDC
 - 2 GND
 - 1 FE

X11 Ethernet-0

Cutout dimensions for circuit cabinet installation:

MTB.747.15 D1



Please note the following cutout dimensions for circuit cabinet installation:

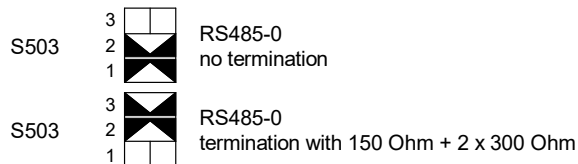
Assembly dimension:
width x height x depth
278,4 x 209,3 x 60 mm

Cutter dimension:
width 250,2 mm x height 181,1 mm

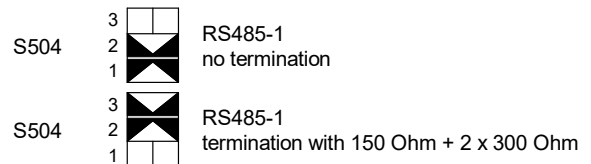
8 drilled holes Ø 5,0 mm
for 8 stud bolts M4

Configuration:

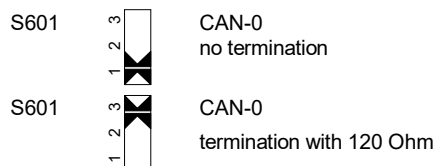
Slide switch RS485-0 termination



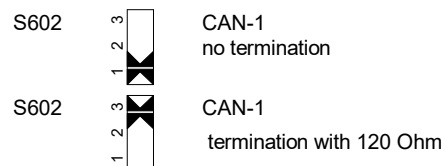
Slide switch RS485-1 termination



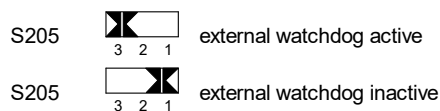
Slide switch CAN-0 termination



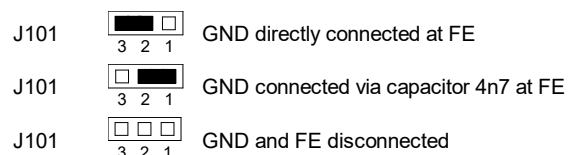
Slide switch CAN-1 termination



Jumper Watchdog



Jumper GND / FE



Technical Specifications:

MTB.747.15 D1

Supply

24VDC $\pm 10\%$, max. deviation 5 %

Operating current

Basic device approx. 650 mA
additionally digital outputs

Display

9" WVGA Touch Display, resistive, 4-wire
TFT, 800 x 480 Dots, graphics capable

System

Microcontroller CPU A9/450 with
Interface CAN

Memory

128 MB RAM, 4 GB FLASH, 64 kB Retain

Interfaces serial

2x RS232 (RX, TX) or RS485 (max 2
interfaces usable)
2x CAN BUS
2x USB
1x Ethernet TCP/IP

SD Memory Card Slots

1x SD Card Slot
1x Micro SD Card Slot (optional)

Status Indication

1 LED module status indication

SPS Programming

IEC 61131-3 / CODESYS

Digital Inputs

4 Digital Inputs 24VDC, $\pm 10\%$, 10 mA
(DE00 ... DE03)

Digital Outputs

4 Digital Outputs Transistor, 24VDC 0,5 A
(DA00 ... DA03)

Watchdog Relay

Watchdog with relay output
Change-over contact 24VDC

Battery 3V / 170 mAh

Durability approx. 2 years (Manufacturer
Information), Data preservation during
battery change approx. 2 hours.

Realtime Clock

Clock with Date, Data preservation via battery

Climatic Conditions

storage temperature $-10...+70\text{ }^{\circ}\text{C}$
surrounding area temperature $+5...+40\text{ }^{\circ}\text{C}$
atmospheric moisture until 85 % without
condensation according to VDE 0160,
EN 50178, Rating 3K3

Mechanical Specifications

Aluminum box for circuit cabinet installation
pluggable screw-type terminals
Dimensions: width x height x depth
278,4 x 209,3 x 60 mm
Weight approx. 1350 g

General Informations

Use shielded cables for serial data lines.
The Master Terminal requires sufficient
grounding!

Protection Category

according to DIN 40050
IP 65 (front side)
IP 20 (back side)

Installation Advices

Please pay attention to the separate
informations about EMC-compatible
hardware installation in the systems manual
of the SABO Elektronik GmbH.

downloadable via <http://www.sabo.de>

Installation Advices:

Configuration

Warning! Please note the internal configuration, the firmware version
and mounting details before module installation.

Mounting

Do not plug the extension module when a voltage is supplied, because
module damage or data loss are possible.

CAN Bus Termination

In standard termination the microprocessor module respectively the
first fieldbus module and in addition the last fieldbus module should be
terminated. Maximum two terminations are allowed.

Installation Advices

Please pay attention to the separate informations about EMC-
compatible hardware installation in the systems manual of the SABO
Elektronik GmbH.

downloadable via <http://www.sabo.de>

Device:

Master Terminal PLM 747-1 with CPU A9/450

Order Code:

MTB.747.15