

Users guide and installation instructions

For PLM 800 master terminals family



- MTB.804.10 and 20**
- MTB.805.10 and 20**
- MTB.807.10 and 20**
- MTB.810.20**
- MTB.815.20**
- MTB.821.30**

Important advices

Electrical power



De-energize the system on which the controller is to be installed or serviced. Failure to do so may result in electric shock and/or damage to the system and/or the controller.

Movable system parts



De-energize the system on which the controller is to be installed or serviced. Failure to do so could result in injury from moving system parts.

Protection



The front side of the PLC fulfils protection category IP65.



The back side of the PLC fulfils protection category IP20, so it is forbidden to expose the back side to areas, which require higher protection.

Electrostatic discharge



When working with the PLC make sure to be sufficiently grounded. Avoid to touch terminal contacts, interfaces and printed circuit boards.

Personnel qualification

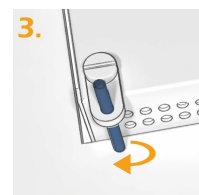
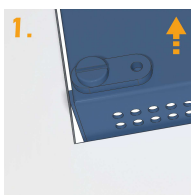
Every person that works on or with the PLC has to be an electrical specialist with sufficient experience in automation technology. SABO is not liable for errors and/or damage caused by improper handling.

Installation

Front panel cut outs


For the dimensions of the required front panel cut outs, the recommended fasteners and their torque refer to the technical data sheet of the used device.

Fixing the controller



The mounting arms and the PLC fix themselves due to the pressure of the set screws. It is forbidden to lose or tighten the flat headed screws.

Power supply connection

Contact	Function		Wire size	Installation advices
PLM 804 (X4), PLM 805 (X9), PLM 807 to 821 (X1)				
1	FE		Authorized are wire sizes from 0.25 mm ² to 1.5 mm ² .	Follow the separate information about EMC compatible hardware installation in the systems manual of the SABO Elektronik GmbH. downloadable via http://www.sabo.de
2	GND			
3	24 VDC ±10 %			